

SOPAC-SPC-SPREP
Trilateral Programme Consultations

**Progressing Paragraph 19 (b) of
PIF Leaders' decision on
Regional Institutional Framework**

Holiday Inn, Suva
Thursday 16th May 2008

This presentation

- * **Brief Overview of SPC**
- * **Structure**
- * **Programme Expansion**
- * **Mode of Service Delivery**
- * **Funding**
- * **Staffing**
- * **Overview presentation will be followed by programme presentations.**

Overview

- * **Role in the region**
 - Established in 1947, 61 years ago under the Canberra Agreement.
 - SPC is a technical advisory; technical assistance; training and research institution.
 - English and French are its working languages
- * **Membership:**
 - 26 countries & territories in total.
 - * 22 island members in Melanesia, Micronesia and Polynesia plus
 - * 4 metropolitan members

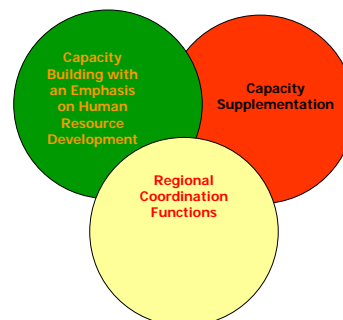
Vision – Vision - Mission

- **Vision for the Region**
A secure and prosperous Pacific Community whose people are educated and healthy and manage their resources in an economically, environmentally and socially sustainable way
- **Vision for the Organisation**
A highly professional, bilingual and dynamic technical Secretariat that is closely attuned to the needs, aspirations and priorities of its members and works in partnership with other national, regional and international organisations and its development partners to serve our island members
- **Mission:** to help Pacific Island people position themselves to respond effectively to the challenges they face and make informed decisions about their future and the future they wish to leave for the generations that follow.

➤ **SPC CORPORATE PLAN**
– Our corporate values

- **Put people first**
- **Focus on priorities of our members**
- **Out-come driven with emphasis on results, transparency and accountability**
- **Alleviate poverty; poverty to opportunities & vulnerability to poverty**
- **Committed to the three pillars of sustainable development – economic development, social development & environmental protection**
- **Foster strategic alliances / partnerships; & strategically engage, analyse and provide options for decision-making**
- **Committed to gender equity and equality**
- **Committed to excellence and highest professional & ethical standards**

SPC – THE CORE BUSINESS



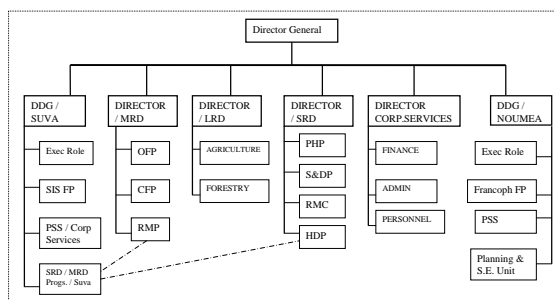
➤ CORPORATE PLAN Corporate Objectives – 2007 - 2012

- Increased Focus on Member priorities
- Strategic Engagement at national, regional and international level
- Strategic positioning of the organisation

➤ INTEGRATED APPROACH TO PLANNING

- Corporate Plan 2007-2012
- Strategic Three-Year Plans for Programmes
- Annual Work plans and Budgets
- Individual (Staff member's) annual performance planning and appraisal
- SPC has a training programme and one-on-one assistance is available. Documented guidelines provide assistance to staff.

SPC Structure (current)



SPC Structure

- * SPC structure will be influenced by a number of programme movements flowing on from RIF and other reforms such as:
 - Institutionalization of RRRT into SPC from UNDP from 1 July 2008
 - Transfer of the Infrastructure / Transport / communication programmes of PIFS into SPC from January 2009
 - Absorption of SPBEA into SPC sometime in 2009

SPC Structure

- * Rationalization of Programmes from SOPAC to SPREP and SPC will also affect the structure of both organisations.
- * The RIF process provides an opportunity for both SPREP and SPC to examine their own structures and modalities of service delivery to ensure the resulting arrangement guarantees a much better & higher level and quality of service compared to current arrangements.

Mode of Service Delivery

- * SPC Conference (2005 & 2007) have directed that SPC:
 - Moves Services closer to people
 - Develop with each member longer-term Joint Country Strategies (JCSs) across the whole scope of the organisation's programmes where the JCS is:
 - * Linked directly to the country's national sustainable development strategy (NSDS) or equivalent and / or sector development strategies;
 - * A monitoring tool for the country in relation to SPC activities, and
 - * An implementation plan for SPC in the deliver of services to all members,
 - * Appropriately resourced to deliver agreed services

Mode of Service Delivery (cont'd)

- * **Decentralize beyond Noumea and Suva;**
 - SPC has a regional office at FSM; will open a PNG office in June and Solomon Island Office later in the year; has a physical presence in 12 other member countries and territories, and is considering opening a regional office in the eastern Pacific, with the southern, central, northern and western Pacific now covered. Country presence is a major part of SPC's service delivery model. It ensures a permanent link with members. SPC has a physical presence in 17 of its 22 island members.
- * **Strategically engage in Policy development / implementation that have direct benefit for PICTs**
- * **Lead / develop / coordinate / implement technical / scientific / technological solutions that benefit members**

Mode of Service Delivery (cont'd)

- * **Participatory Planning & delivery**
 - taking the JCS agreed priorities further to implementation involves dedicated attention to participatory methodologies. Proven to enhance ownership & sustainability
- * **Focus on measurable Impacts and Outcomes**
 - this is a key feature of SPC's service delivery mode. We invite beneficiary of our assistance to share the experience of their success to CRGA and Conference, and how the assistance had improved / transformed their future (individually) or at a national level. This is important in particular for donors to witness how the funds they provide had made impacts on the lives of beneficiary individuals, communities and countries.

SPC Funding

- * **A budget of CFP 5 billion (USD 60 million) in 2008, made up of**
- * **Membership contributions and other income**
- * **Voluntary funding for specific programmes and specific projects**
- * **Very low administrative overheads: < 10 % of budget**
- * **Budget expected to increase by at least 6 million USD during 2008**

Staffing

- * **A total of 359 staff (prior to incorporating other programmes)**
- * **199 staff in Noumea**
- * **120 based in Suva, Fiji Islands**
- * **40 in other countries including the OCTs**
- * **49 % are women**
- * **35% (64) of professional staff are women**
- * **46 % (83) of professional staff are Pacific Islanders (number of Pacific islanders employed at SPC at professional level is larger than total size of some agencies)**

That's it for the overview folks

Thank you

We now have programme presentations

