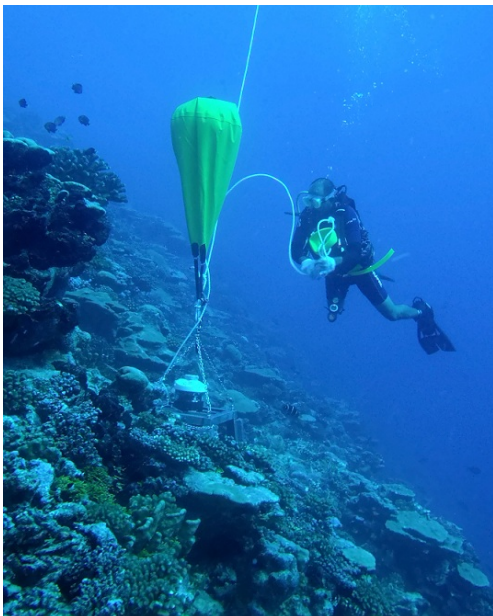
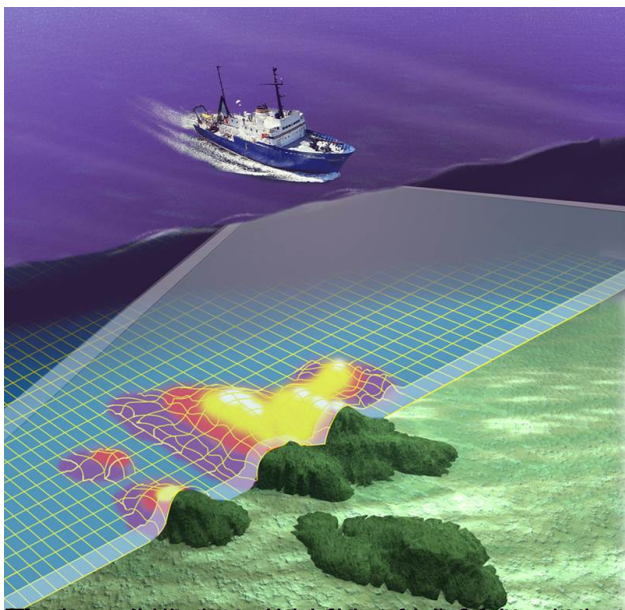


Marine Coastal Science & Survey (MCSS) is the largest sector in the Oceans and Islands Programme. MCSS provides expertise to member countries in oceanography, hydrography, coastal processes and geomorphology, geophysics, hydrodynamic modelling, habitat mapping and geodetic survey.

The [Technical Workshop](#) facility is also associated with the MCSS Sector, providing additional personnel and expertise during equipment mobilisation and instrument deployment in the field.





~~Environmental Impact Statement for the proposed development of a new port at the mouth of the River Mersey, Liverpool, Merseyside, England~~